

STARCRAFT

# Conquer the Climb



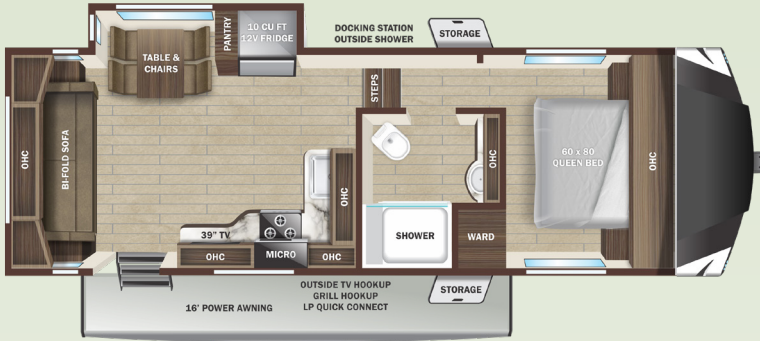
**GSL**

**LIGHT DUTY**

2024 Fifth Wheels

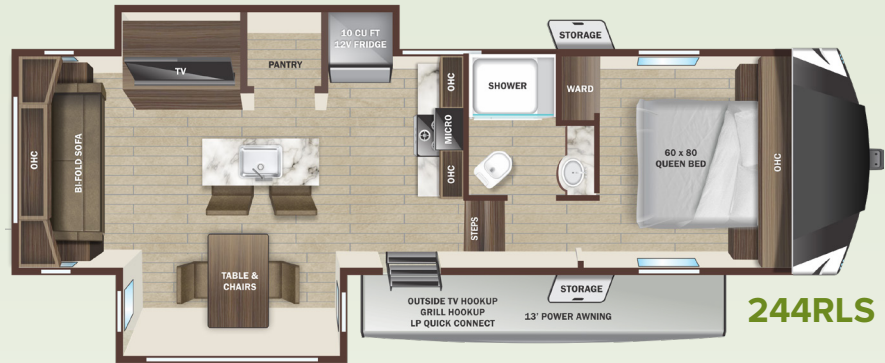


2024 Starcraft GSL LD FW 234RLS



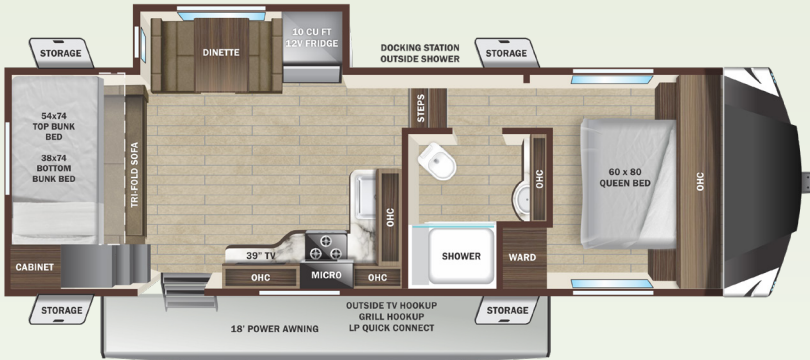
234RLS

OPTIONS  
A



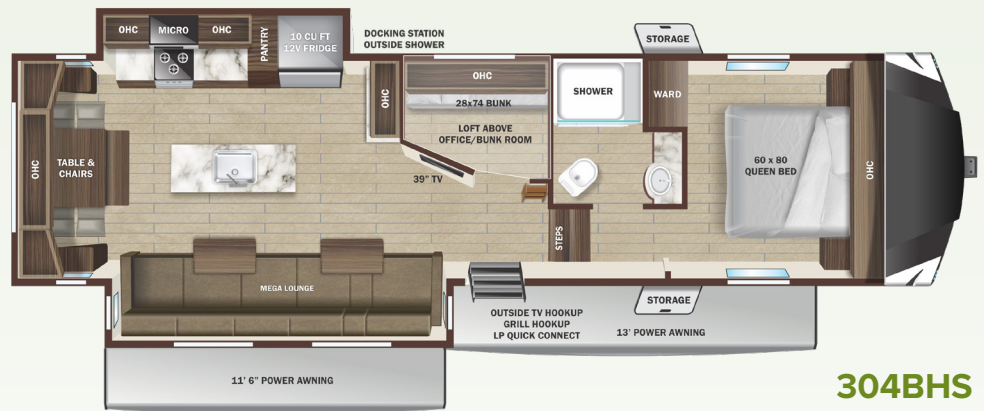
244RLS

OPTIONS  
A & B



274BHS

OPTIONS  
C



304BHS

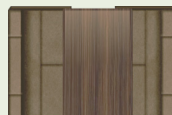
GSL LIGHT DUTY OPTIONS

A



THEATER SEAT OPTION

B



DINETTE OPTION

C

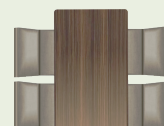


TABLE & CHAIRS/BENCH OPTION

## STANDARD INTERIOR EQUIPMENT

- 9 cu. ft. Microwave
- 10 cu. ft. 12V refrigerator
- 60" x 80" residential queen bed
- 75 lb. ball bearing drawer guides
- Cable and satellite prep
- Flush floor slides with residential vinyl flooring
- Hardwood cabinet doors
- Hardwood slideout fascia
- LED interior lighting
- Observation camera prep
- Oven and 3-burner range with flush mount glass cover
- Roller blackout night shades

## STANDARD EXTERIOR EQUIPMENT

- 100" wide body frame
- 2" receiver hitch
- 3-20 lb. LP bottles
- 50 amp service
- ACCU-SLIDE™ slide system (4-corner compression)
- Battery disconnect switch
- Brass hanger bushings with wet bolts
- Equa-Flex® axle suspension
- Exterior grill/griddle quick connect port
- Laminated block foam floor
- LevelLoc™ - 4 point automatic leveling with JT's Strong Arms®
- PVC roofing membrane (limited lifetime warranty)
- Rear roof access ladder prep
- Self-adjusting electric brakes
- Spare tire

- TuffShell™ -vacuum bonded laminated construction, reinforced with heavy-duty fiberglass and welded aluminum frames
- Xtend Solar I Package (1-200 watt solar panel with 30 amp controller)

## EXECUTIVE PACKAGE (Mandatory)

- 115,000 BTU roof mounted A/C
- Bluetooth® ceiling speaker
- Bluetooth® exterior speakers
- Cutting board and sink strainer
- Dome style digital TV antenna with 5G Wi-Fi prep
- Interior convenience center light
- Keyed-Alike® entry and baggage doors
- Painted fiberglass front cap with LED lighting
- Power awning with LED lighting
- Quick recovery gas/electric water heater
- Quick release fresh water drain
- Residential high-rise faucet with pull-down sprayer
- Single basin stainless steel under-mount kitchen sink
- Smart HDTV
- Solid swing-down entry steps
- Stainless steel appliances
- TravelLINK® - Smart RV system that allows for Bluetooth® control of awnings, lighting, slideouts, heating, cooling and more
- USB/12V charging port

## FOUR SEASON PACKAGE (Mandatory)

- Double insulated baggage doors
- Ducted heat to underbelly with cold air return
- Enclosed cable operated gate valves

- Enclosed exterior docking station with black tank flush
- Heated and enclosed underbelly
- High performance furnace
- R-38 reflective foil insulation in ceiling and underbelly
- R-9 block foam insulation in sidewalls

## OPTIONS

- Xtend Solar II Package (2-200 watt solar panels with 30 amp solar controller and 1800 watt inverter) (Replaces standard Xtend Solar I Package)
- 15,000 BTU ducted 2nd A/C
- BBQ grill
- Frameless dual pane windows
- Freestanding table with chairs (274BHS)
- Generator prep-LP
- Main bedroom TV- 32"
- Observation camera
- Power Theater Seats IPO Dinette (234RLS and 244RLS)
- Wi-Fi router



Go the distance with our 3-Year Limited Structural Warranty plus a 1-Year Limited Manufacturer's Warranty—freedom from worry is your best travel companion.

SPECIFICATIONS (May Include Estimated Values)	234RLS	244RLS	274BHS	304BHS
Unloaded Vehicle Weight (lbs.)	7,055	7,680	4,645	8,680
Dry Hitch Weight (lbs.)	1,280	1,330	1,410	1,435
Gross Vehicle Weight Rating (GVWR)	8,900	9,500	9,500	10,115
Cargo (Gross)	1,845	1,820	1,945	1,435
Exterior Length (Pin to Rear)	26' 6"	27' 7"	29' 9"	32' 6"
Exterior Length (Overall)	27' 3"	28' 4"	30' 6"	33' 2"
Exterior Height	12' 7"	12' 8"	12' 7"	12' 9"
Exterior Width	8' 4"	8' 4"	8' 4"	8' 4"
Exterior Width (Slides Out)	11' 4"	13' 11"	11' 4"	13' 11"
Interior Height (Upper Deck)	6' 7"	6' 4"	6' 4"	6' 4"
Interior Height (Lower Deck)	8' 5"	8' 6"	8' 6"	8' 5"
Fresh Water Capacity (Gal.)*	61	61	61	61
Gray Waste Water Capacity (Gal.)	30	60	30	60
Black Waste Water Capacity (Gal.)	30	30	30	30
LP Capacity (lbs.)	60	60	60	60
Tire Size	16"	16"	16"	16"
Awning Size	16'	13'	18'	11' 6", 13'

\*Includes water heater

Learn more about our standard features and full options packages at [StarcraftRV.com](http://StarcraftRV.com)

### LOCAL DEALER INFO

**STARCRAFT**  
 Starcraft RV – Part of the Jayco Family of Companies  
 903 S. Main Street  
 Middlebury, IN 46540 USA  
 (800) 945-4787

Unloaded Vehicle Weight (UJV): Sometimes referred to as "Dry Weight," UJV means the typical weight of this trailer as built at the factory. The UJV, as used in product literature and other promotional materials, does not include cargo, fresh water, propane, options or dealer-installed accessories. Hitch Weight (HW): The hitch weight, as used in product literature and other promotional materials, does not include cargo, fresh water, propane gas, options or dealer-installed accessories. The addition of these types of items will either add to or subtract from the stated hitch weight. It is important for your safety and enjoyment that your tow vehicle be adequately sized and equipped to tow and handle the GVWR of the RV you select. Review weights and rating of your tow vehicle and consult a competent advisor for questions or advice. Whether you are new to RVing or a veteran, get a feel for the performance of your tow vehicle before heading out on the roadways. When you tow an RV, you must drive differently than when you drive a single vehicle. Practice hooking up, driving, backing up and braking in a safe environment or seek out professional instruction. Starcraft affixes a weight label to each RV which lists weight information for that vehicle. See specifications chart on the respective pages of this brochure.

Starcraft RV | 903 S. Main Street | Middlebury, IN 46540 | See dealer for further information and prices. All information in this brochure and on [www.StarcraftRV.com](http://www.StarcraftRV.com) is the latest available at the time of publication approval. Starcraft RV reserves the right to make changes and to discontinue models without notice or obligation. Photography may show optional equipment or props used for decoration purposes only. RVs built for sale in Canada may differ to conform to Canadian codes. Starcraft and the S are registered trademarks of Jayco, Inc. Printed in U.S.A.